



**PLANET  
INDONESIA**

**2017 ANNUAL REPORT**





**PLANET  
INDONESIA**

# TABLE *of* CONTENTS

<b>4</b>	Message from the president
<b>6</b>	Our Impact
<b>9</b>	What We Do
<b>10</b>	Coastal Mangroves
<b>11</b>	Bornean Rainforests
<b>13</b>	Advocacy and Policy
<b>15</b>	Report of Financing



# MESSAGE *from the* PRESIDENT

## RELEASING THE 2017 SUCCESS STORIES

### "INTEGRATED CONSERVATION MODELS THAT CAN GO TO SCALE" - ELIZABETH KENNEDY

---

Dear Readers,

I firmly believe that what makes Planet Indonesia a success is our core values. Planet Indonesia puts the wellbeing of people at the center of conservation efforts. In doing so, it's changing the conservation conversation and showing that durable species protection and nature conservation go hand in hand with the empowerment of local people.

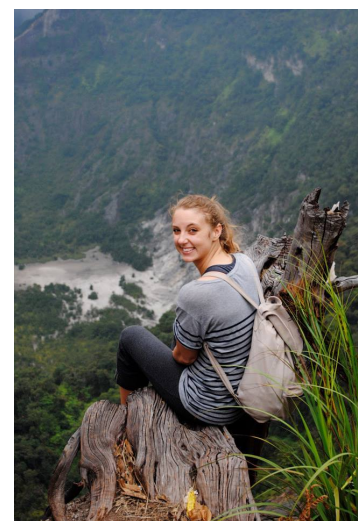
We know that one of the primary drivers for environmental loss in Indonesian Borneo is economic need. People often take up illegal logging, wildlife trafficking or overfishing to address kitchen table issues: they need to buy school uniforms, pay down medical bills, or feed their families. Planet Indonesia *listens to why* people choose these activities and then *provides them the resources and skills* to pursue more sustainable paths to *survive and thrive*. Planet Indonesia is developing a new legion of local conservation leaders in

the process. It's a powerful exchange: by helping people create green businesses, educate themselves, and access healthcare, the organization protects endangered species like the Bornean Orangutan and precious carbon sinks that benefit all of us.

The value of Planet Indonesia's work is gaining local recognition. While the organization continues to seek out new villages in which to operate, increasingly villagers approach Planet Indonesia to request support. The organization has also strengthened its collaboration with the Indonesian government. These partnerships demonstrate the value of Planet Indonesia and better enable it to tackle conservation challenges.

I hope you enjoy this year's annual report, which highlights some of the impressive milestones in 2017. Thank you to all of you who helped the organization grow and expand its

programs this past year. After reading the report, I invite you to consider a donation to ensure that 2018 marks yet another year of success! .



**ELIZABETH KENNEDY**  
PRESIDENT OF THE  
BOARD



# MESSAGE *from the* EXECUTIVE DIRECTOR

## CONSERVATION OPTIMISM

### "INNOVATING CONSERVATION THROUGH IMPROVING HUMAN WELL-BEING" - ADAM MILLER

---

Dear Readers,

It is with great pleasure that we release our 2017 annual report, a story of hope, positive change, and the growth of Planet Indonesia.

At Planet Indonesia we believe in conservation that improves the lives of local communities, in conservation that is positive, and in initiatives that break down the traditional boundaries of environmentalism and community development.

2017 was yet another year of success. From the increase in our community capital funds by nearly USD\$7000 to the 40,000+ hectares (~105,000 acres) of forest with new community-based management and protection strategies.

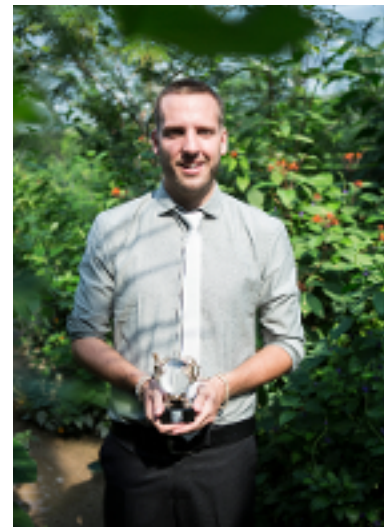
2017 also proven to be another year of recognition across multiple geographic scales. From over 800

nominees from around the globe The United Nation's Development Programme awarded Planet Indonesia the prestigious Equator Prize, an award given to organizations who have innovative nature-based solutions to sustainable development.

Locally, 8 new villages came to us in 2017, asking to work with Planet Indonesia to create local solutions to improve well-being through conservation and sustainability.

It is with great excitement and pleasure that I share these results with you all. As a charity, **our impact is your impact**. Your gifts, support, and belief in our work is ultimately how our wheels keep turning, and how we are making this planet a

better place for all living creatures.



**ADAM MILLER**  
EXECUTIVE DIRECTOR  
PLANET INDONESIA - USA

# ABOUT *our* IMPACT

**WE ARE AN IMPACT-DRIVEN ORGANIZATION CREATING SCALABLE SOLUTIONS TO CONSERVATION**

**3000+**



Our model has reached 3034 households, creating shared solutions to catalyze conservation through improving human well-being.

**43,000+**



Our model has created new community-based management strategies protecting over 40,000 hectares of Bornean rainforests and mangrove forests.

**30,000+**



Our village-led partnerships not only helped conserve at-risk ecosystems, but also helped restore degraded buffer zones and lands. Over 30,000 seedlings were planted together with our partnership villages to improve the ecological and economic value of degraded land across multiple locations.

**\$7000+**



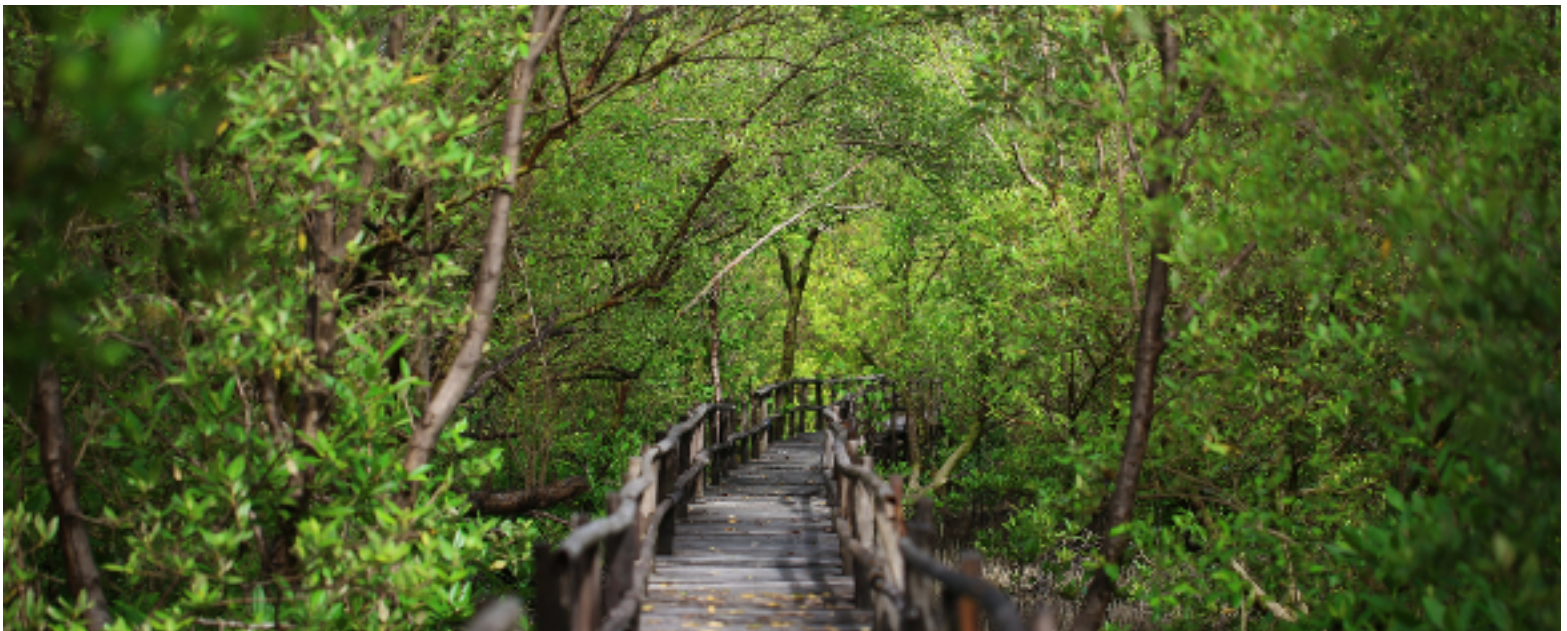
In 2017, our community capital fund saw a USD\$7034 increase. This community-based savings and loans program helps communities overcome hardships and decreases reliance on natural environments when faced with economic hardships such as drought, flood, or unexpected healthcare bills.





# 2017

## A Year of Growth







## **Socially beneficial village-led conservation**

We demonstrate the positive impact of locally-led and managed conservation initiatives.



# HOW *we* WORK

## THE ISSUE:

**Socio-economic inequalities in rural communities drives environmental and biocultural loss**



## WHAT WE DO:

**We conserve at-risk ecosystems through village-led partnerships**

## HOW WE DO IT:

**We provide community-based services in three sectors: business, education, and health in exchange for protecting and restoring at-risk ecosystems**



## COASTAL MANGROVE FORESTS

### FROM FOREST TO SEA...

#### CATALYZING CONSERVATION EFFORTS FROM TERRESTRIAL TO MARINE ECOSYSTEMS

---

Planet Indonesia is dedicated to rigorously testing our model in multiple sites. Our model begins with listening to communities, understanding why and how environmental loss is happening, and what are the major drivers of it. We believe communities are the **first and last line of defense** when safeguarding biodiversity.

From day one we designed a model that could easily be replicated and scaled-up. We believe, anywhere in the world where socio-economic inequalities is driving environmental loss, our model can be used.

In our 2016 assessments of coastal mangrove forests we found the same story. Basic access to various services was causing overfishing and illegal logging in mangrove areas.

In 2017, we officially expanded to launch our model in coastal areas. We created village-led partnerships to catalyze conservation at the grassroots level.

So far, over 5000 hectares of mangroves have been protected, over 200 households have signed up for business and literacy services, and utilizing locally managed fishing grounds there has been a spike in crab and shrimp populations.

In 2018, due to our success 4 new villages have requested our services and programs. It is not common for conservation organizations to have their

programs in high demand. Too often, particularly in the developing world, conservation groups cause conflict among local communities and governments.

Our model demonstrates that a commitment to the community can catalyze conservation through improving human well-being.







## BORNEAN RAINFORESTS

# INDIGENOUS-LED CONSERVATION

## CONSERVATION THAT MAKES SENSE...

---

We conserve at-risk rainforests in Borneo through partnerships with Indigenous communities. Bornean rainforests are some of the most biologically diverse in the world, but are highly threatened.

Over 16.8 million hectares, an area 4x of Switzerland, has been lost on the island over the last 30 years.

Planet Indonesia has been expanding our model to reach more villages, improving human well-being while catalyzing conservation.

Our programs and services work with communities to improve local food security, agriculture practices, and create harmonious partnerships between villages and the ecosystems they inhabit.

In 2017, we worked with local communities to create new management practices on over 40,000 hectares of virgin bornean rainforests. These forests support local livelihoods and also some of the most endangered species on our planet. Our organic agriculture program is helping Indigenous communities practice more sustainable agriculture while improving local food security in the protected area buffer zone. Over 400 households were reached in 2017.

We also work with communities to restore the value of degraded lands through non-timber forest products. Last year over 20,000 seedlings were planted to improve the ecological and economic value of degraded lands in protected area buffer zones.







## Community Wildlife Protection Units

We partner with local communities to improve management and community-based law enforcement to protect the rainforests and wildlife of Indonesia





## INTEGRATING POLICY AND ADVOCACY

### ADVOCATING FOR BIODIVERSITY THROUGH GOVERNMENT PARTNERSHIPS

#### COMBINING TOP-DOWN AND BOTTOM-UP APPROACHES

In 2017, Planet Indonesia signed a 5 year partnership with the Indonesian Government to improve top-down regulation that protects communities, ecosystems, and wildlife. The same year, we were awarded the number 1 government partner in West Borneo through the Balai Konservasi Sumber Daya Alam (Department of Natural Resources).

Our policy and advocacy work catalyzes conservation by improving top-down regulation and management. We believe it is essential to advocate for community rights and improve management strategies through multiple stakeholders.

Our **Wildlife Trade Unit** and **Regulatory Framework Unit** work to cripple illegal supply chains for timber and wildlife within Indonesia. We focus on large crime groups that prey on local communities offering illegal solutions to local poverty.

While our model improves human well-being at the grassroots level, our government work fights wildlife crime and illegal timber trade within Indonesia.



We partner with governments and local communities to conduct Forest Patrols and Urban Wildlife Trade Monitoring to both protect wild populations *and* cripple illegal supply chains.







## Research and Wildlife Monitoring Unit

We conduct intensive studies to produce sound scientific knowledge to inform community-based management and government policy.





# REPORT *of* FINANCING

	<b>Planet Indonesia - USA</b>	
	<b>2017 Financial Summary</b>	
<b>Category</b>	<b>Received</b>	<b>Expenditure</b>
Grants Income	337954	
Donation	34735	
Project Refunds	182	
Travel		12671
<b>Program Support*</b>		<b>275678</b>
Personnel		24250
Fundraising		1530
Other Operational Costs**		3816
<b>TOTAL</b>	<b>372,871</b>	<b>317,945</b>
<b>Balance January 1st, 2017</b>		<b>51,683</b>
<b>Balance Remaining Dec. 2017</b>		<b>106,609</b>

\* Program support is provided to our in-country partner, Yayasan Planet Indonesia

\*\* Other Opp Costs consists of bank fees, equipment, IT, and other small operational costs



# PLANET INDONESIA

**PLANET INDONESIA - USA**

241 Selma Ave

St. Louis, Missouri

63119

[www.planetindonesia.org](http://www.planetindonesia.org)